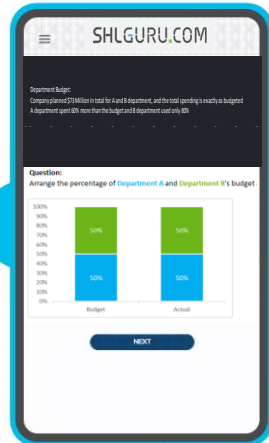


# Welcome to Numerical Reasoning Test 1



Sales performance (houses sold; sales target)

Alex: 50; 100	Bob: 25; 25
Chris: 60; 75	David: 50; 110
Emma: 60; 110	Felix: 75; 60

**Question:**

Rank the salespersons by sales target completion rate (sold/target), from 1 (highest) to 6 (lowest)

Alex	
Chris	
Emma	

Bob	
David	
Felix	

## Hours of work missed due to absences

Mon	Tue	Wed	Thu	Fri	Sat
121	154	131	171	141	160

**Question:**

Graph the change from the previous day in hours of work missed due to absences



## New Hires

Company A hired 300 employees in 2022

**Q1**

Accounted for 22% more of the total hires than Q4

**Q3**

Hired the most

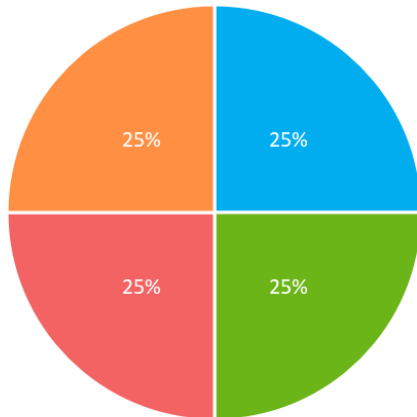
**Q2**

hired  $\frac{2}{3}$  of Q1 amount

**Q4**

Hired 33 employees

Adjust the pie chart to represent the hires each quarter

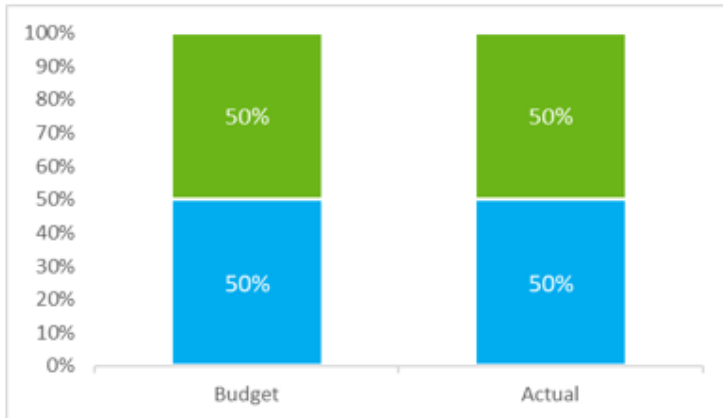


Department Budget:

Company planned \$73 Million in total for A and B department, and the total spending is exactly as budgeted  
A department spent 60% more than the budget and B department used only 80%

**Question:**

Arrange the percentage of **Department A** and **Department B's** budget and spending

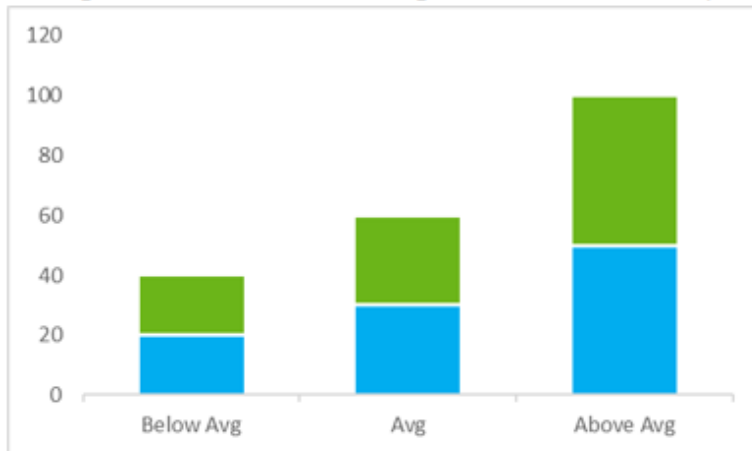


## Feedback

- 100 customer gave feedback in 2021 and 2022
- 30 rated average in 2021
- Below average ratings in 2022 accounted for 25% of the total below average ratings
- 100 rated above average and 40 rated below average in total across 2021 and 2022

**Question:**

Arrange the number of each rating and the 2021 and 2022 percentage for each rating



Number of reports sent

Alex sent the 2nd most reports	Bob sent more reports than Chris and Felix combined
Chris sent 30 reports	David sent twice as many as Emma
Emma sent 1.5 times the number of Bob's report	Two colleagues sent more reports than Felix but less than Emma

**Question:**

Rank the employees by the number of reports they sent from 1 (most) to 6 (least)

Alex	
Chris	
Emma	

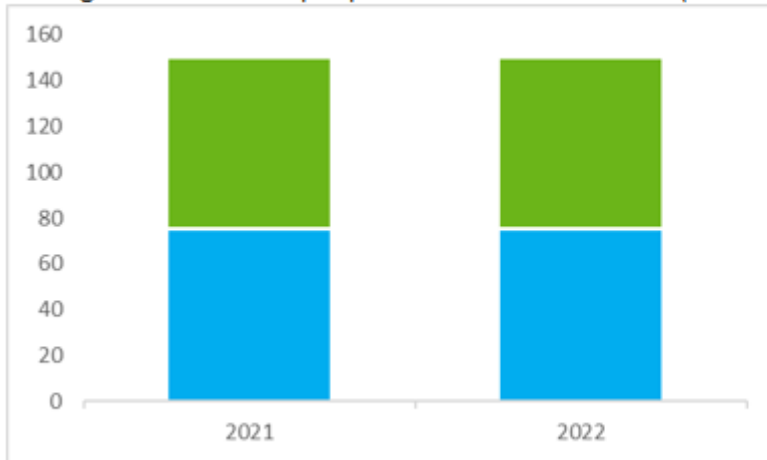
Bob	
David	
Felix	

### Commuting

- the number of people using public transport increased 15% between 2021 and 2022
- Compared to 2021, 5000 more people commute to work
- In 2022, 41400 people used public transport
- In 2021, 189000 people used private transport

### Question:

Arrange the number of people who commute to work (in '000s) and the **Private** and **Public** Transport commuters





A company produces 4 different types of products in batches. Each production batch costs the same, which is \$20,000, regardless of what type of products and how many products produced in a batch.

**Type A**

448 products per production batch

\$125 sale price per product

**Type B**

200 products per production batch

\$250 sale price per product

**Type C**

300 products per production batch

\$200 sale price per product

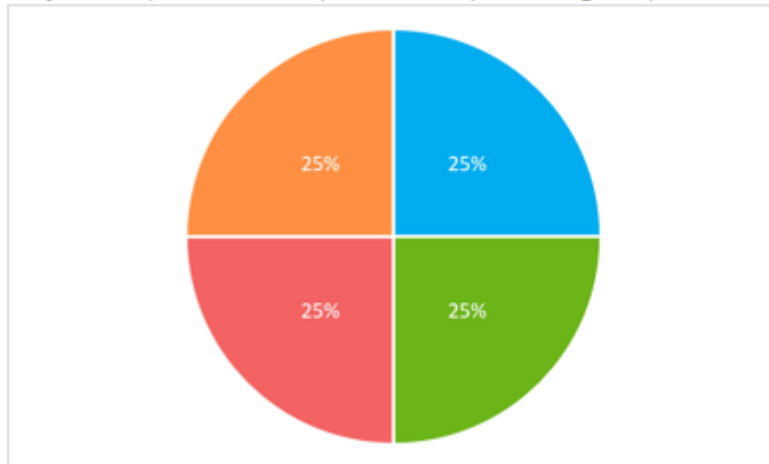
**Type D**

250 products per production batch

\$128 sale price per product

**Question:**

Adjust the pie chart to represent the percentage of profit that each product accounts for.



**Membership type**

- A restaurant is assigning membership type for four customers based on number of visits and average spendings last year
- Gold Member: average spending no less than \$20; more than 6 visits;
- VIP Member: average spending no less than \$30; more than 12 visits;
- Else as standard membership

**Question:**

Assign the right membership type

Total spending:	278			383			589			475		
Number of visits:	7			24			20			15		
Customers:	Alex			Bob			Chris			David		
Membership Type:	Standard	Gold	VIP	Standard	Gold	VIP	Standard	Gold	VIP	Standard	Gold	VIP

A warehouse has 1200 workers working in four shifts

**Day Shift**

Has 348 more workers than Weekend Shift

**Late Shift**

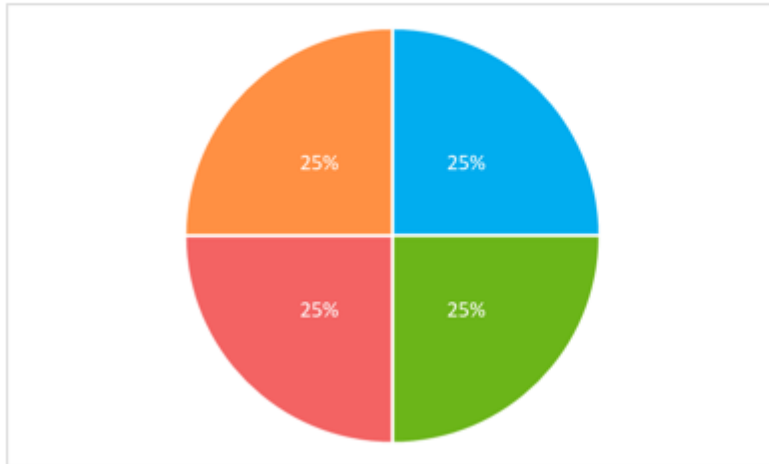
Has 144 workers

**Night Shift**

Has 84 fewer workers than Late Shift

**Weekend Shift****Question:**

Adjust the pie chart to represent the number of workers in each shift



## Congratulations

**You have finished the Numerical Reasoning Test 1,  
Please refer to the answer sheet to check your results.**